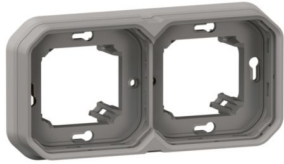


Product sheet



PLEXO™ LEGRAND

Plexo™ - Flush mounting support frame 2-gang - Horizontal and vertical - IP55 - Grey

REF. 069683L | EAN. 3414971881372

The grey waterproof 2-gang flush mounting support Plexo allows the installation, in a 2-gang flush mounting box, of all mechanism functions in Plexo. It can be installed both horizontally and vertically. For indoor or outdoor use.

> [Visit e-catalogue](#)

Description

The grey waterproof 2-gang flush mounting support Plexo allows the installation, in a 2-gang flush mounting box, of all mechanism functions in Plexo. It can be installed both horizontally and vertically. For indoor or outdoor use.

Product characteristics

- Flush mounting support frame to install functions supplied in composable mode (mechanism products).
- IP55 : protected against dust and water spary from all directions.

The product's benefits

Installation

- The support frame can be used for both vertical and horizontal installation thanks to the 90° symmetrical mechanisms. The flexible part on the back of the product adapts to the shape of the wall.

Avantages

- The support frame can be used for both vertical and horizontal installation thanks to the 90° symmetrical mechanisms.

Documentation

TECHNICAL DOCUMENTATION

F03421EN-02.pdf | PDF (1.91Mo)

F03421FR-02.pdf | PDF (1.9Mo)

CAD & Design specs / BIM

BIM-LEGRAND-PLEXO-2023-FRANCAIS.rvt | RVT (158.35Mo)

3D_LG-069683L.stp | IFC (0.98Mo)

BIM-LEGRAND-PLEXO-2023-ENGLISH.rvt | RVT (161.4Mo)

CATALOGUE PAGE & OTHERS

ex223001_0795.pdf | PDF (0.15Mo)

Agreements & Certificates

OC / CB-FR_715939 | (0.64Mo)

MEEI-UP 69267307 002 | (1.25Mo)

OC / CB-FR_718712/A1 | (0.55Mo)




Decl. UE RED-A 4229 A | (0.45Mo)

LGRP-01292-V02.01-FR.pdf | PDF (0.82Mo)

MEEI-UP 69267307 001 | (1.57Mo)

AENOR-030/002621 | (0.71Mo)

VDE-40057978 | (1.18Mo)

-  MEEI-UP 69267307 003 | (1.57Mo)
-  NF-NF012_3294/A2 | (0.74Mo)
-  OC / CB-FR_715726 | (0.74Mo)